

MAP THE FLAVORS

Place the word (if Mvskoke has one) for the flavor on the correct location on the tongue.

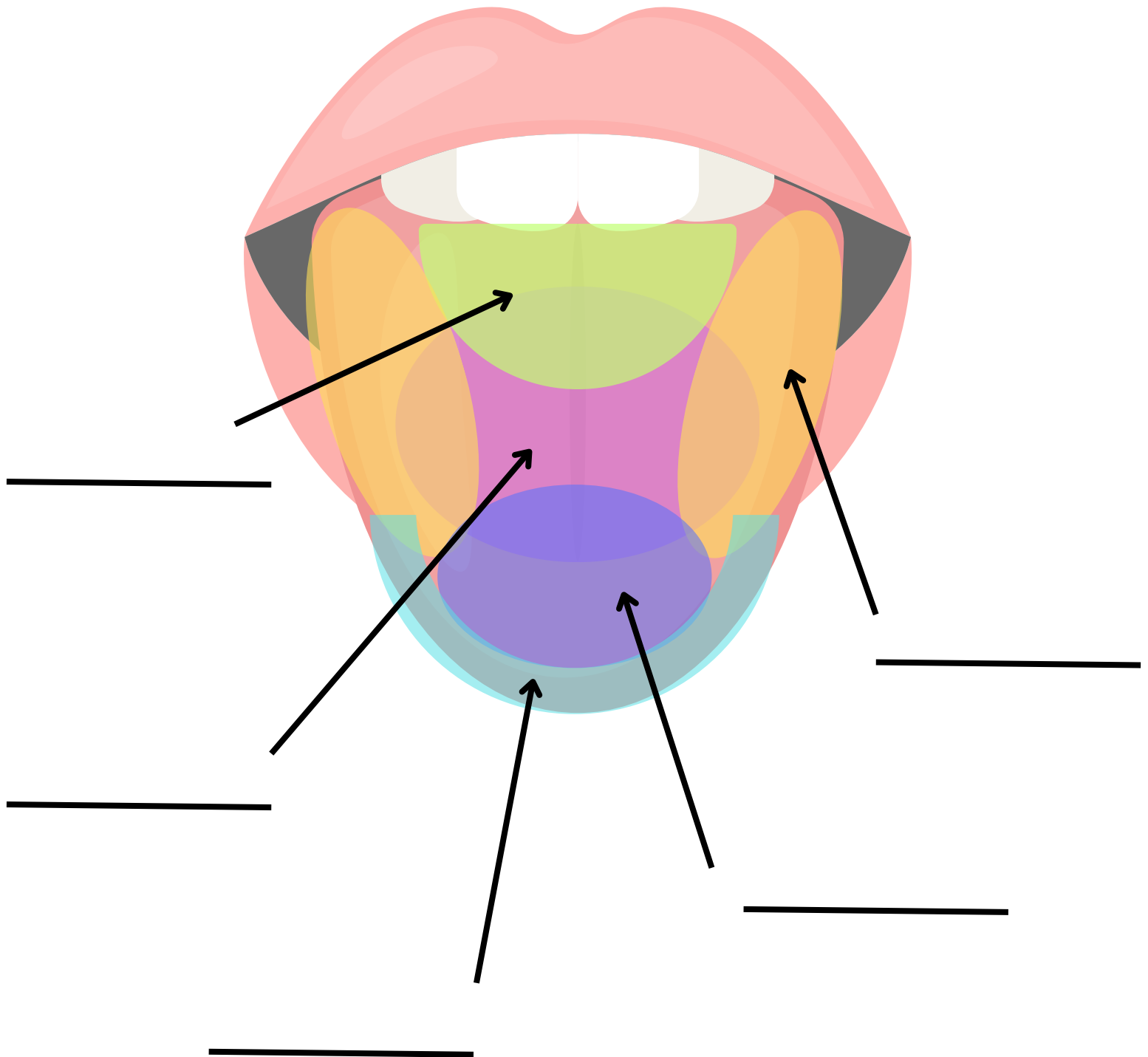
Sour:
Kvmokse

Bitter:
Home

Sweet:
Cvmpe

Salty:
Okcynwe

Umami:
Senhere*



MAP THE FLAVORS

Place the word (if Mvskoke has one) for the flavor on the correct location on the tongue.

Sour:
Kvmokse

Bitter:
Home

Sweet:
Cvmpe

Salty:
Okcwnwe

Umami:
Senhere*

